


**SUMMARY OF WORKS**

- INSTALL 1000KVA PACKAGE CHAMBER SUBSTATION TO SUPPLY STAGE 4 FOR A NOMINAL 1540A LOAD.
- 11KV EXTENSION FROM THORN ST.
- LV INTERCONNECTION TO PILLAR INSTALLED IN STAGE 3 ON LAING ST

CONCEPT ONLY						 Sydney   Newcastle 1300 732 293   projects@powersol.com.au PO Box 278, CHARLESTOWN NSW 2290		TITLE East End, Newcastle Chamber Substation Stage 4 Layout Plan				SHEET 1 of 4		REV NO. B
REV	DATE	REVISION DESCRIPTION	BY	CHECK	APPR'D			CAD FILE NAME N/A	JOB No. 5542	SIZE A3	SCALE NTS	DESIGNER J.ANTONUCCIO		
B	28/03/2023	Updated Concept Plans	JA	CL	JA									
A	9/03/2023	Issued for Archeological Assessment	JA	-	JA									

Proposed HV & LV Cables  
**NOTE: EXACT TRENCH DETAILS/ALIGNMENT TO BE CONFIRMED DURING DETAILED DESIGN**

**HV & LV SECTION**

- 1 300AL4 CABLE IN 150mm CONDUIT
- 2 150mm SPARE CONDUIT
- 3 150mm SPARE CONDUIT
- 4 150mm SPARE CONDUIT
- 7 400AL3 CABLE IN 150mm CONDUIT
- 8 400AL3 CABLE IN 150mm CONDUIT

Connect proposed LV to existing Configuration 'A' commercial pillar installed in previous stage.

Existing 1000kVA package chamber substation - layout 2.

Previous Stage 3

Proposed 1000kVA chamber substation - Layout 2. Refer to sheets 3 and 4 for chamber layout.

Cables to be installed within 2m easements in private property. Cables to be installed with nominal 600mm of cover with bottom of trench at 830mm depth

**Client to confirm if 830mm trench depth is achievable as cables are required to be installed over basement.**

Stage 4

REFER TO TRENCH SECTIONS FOR CABLE TYPES USED.

Note proposed cables to be installed underneath roadway to match existing cable alignments.

Existing supplies in Laing St to be utilised as builders temporary supply, ideally from distributor 059930 from HS55916 (nominal service size of 250A to be confirmed by Ausgrid).

**Client to confirm that some existing supplies have not been disconnected in AN23905 as these provide ideal builders temporary supplies in stage 4.**

Extend 11kV from existing cables installed in Stage 3. Joining details and location to be confirmed during detailed design once the 11kV cable alignment is confirmed.

**Ausgrid to confirm connectivity into existing high voltage network.**

REV	DATE	REVISION DESCRIPTION	BY	CHECK	APPR'D
B	28/03/2023	Updated Concept Plans	JA	CL	JA
A	9/03/2023	Issued for Archeological Assessment	JA	-	JA

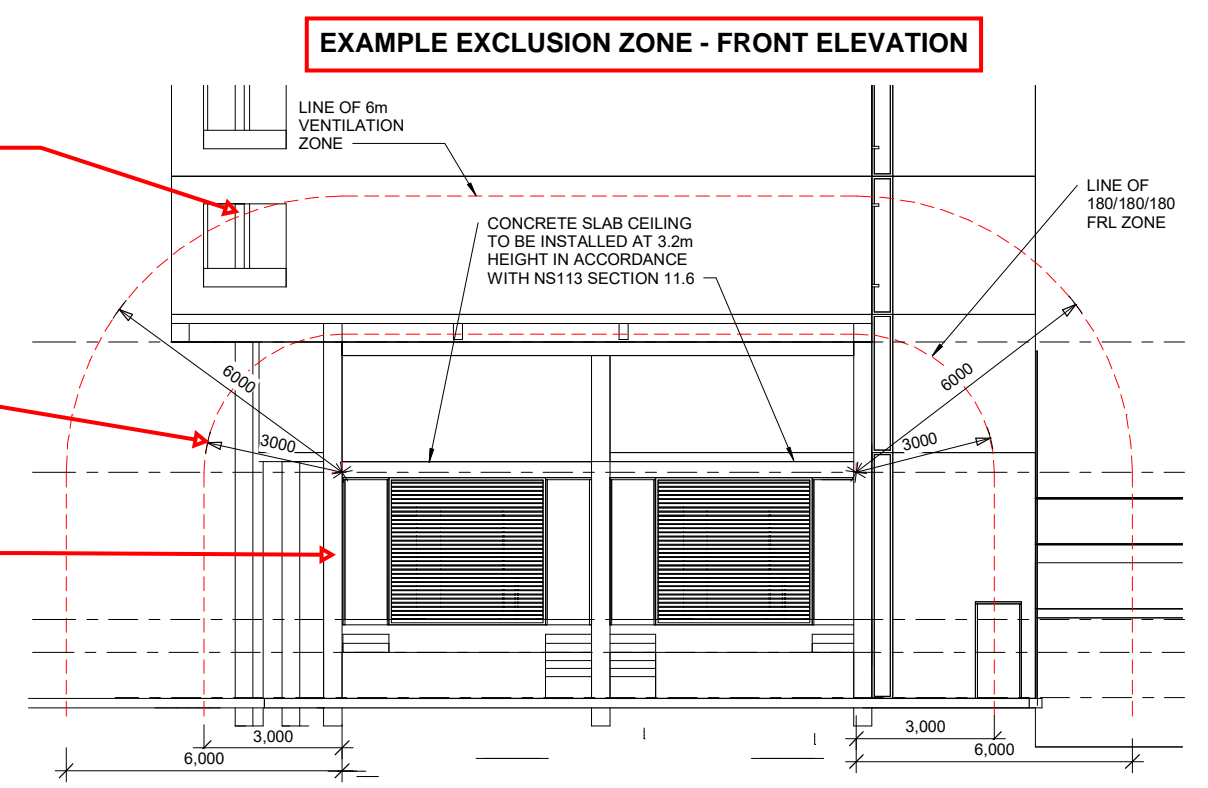
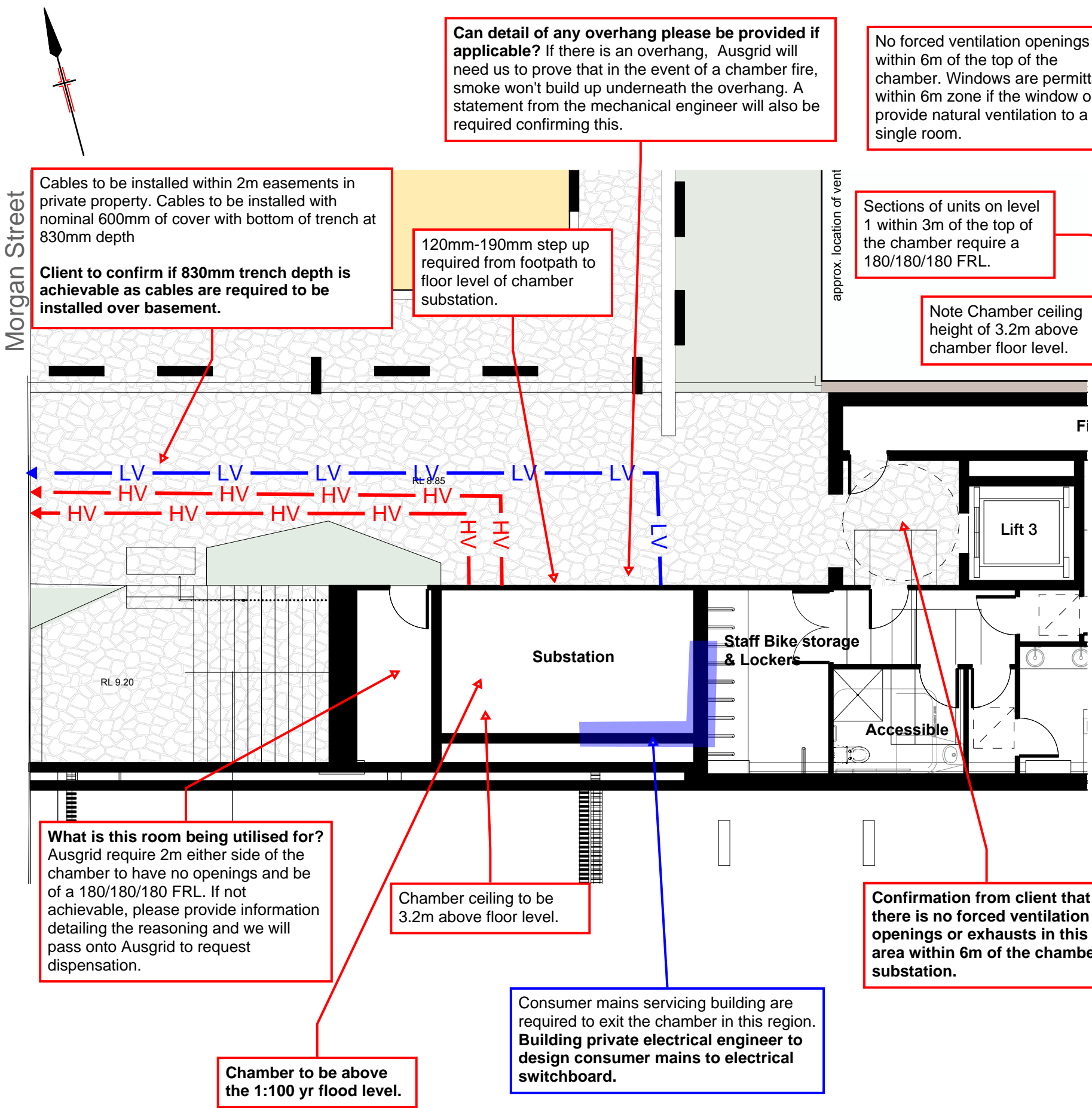
CONCEPT ONLY

**power solutions**

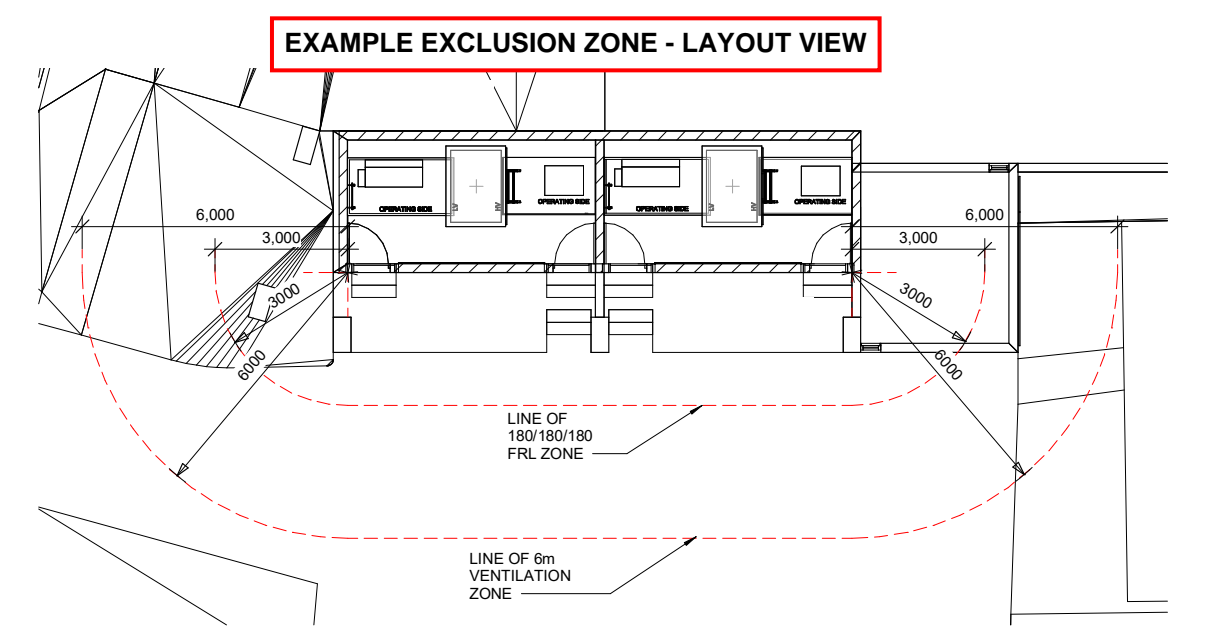
Sydney | Newcastle  
1300 732 293 | projects@powersol.com.au  
PO Box 278,  
CHARLESTOWN NSW 2290

TITLE							East End, Newcastle Chamber Substation Stage 4 GIS/Detailed Plan	
CAD FILE NAME	JOB No.	SIZE	SCALE	DESIGNER		SHEET	REV NO.	
N/A	5542	A3	NTS	J.ANTONUCCIO		2 of 4	B	





3 EXCLUSION ZONE - FRONT ELEVATION  
1 : 100



1 EXCLUSION ZONE - LAYOUT  
1 : 100

REV	DATE	REVISION DESCRIPTION	BY	CHECK	APPRD
B	28/03/2023	Updated Concept Plans	JA	CL	JA
A	9/03/2023	Issued for Archeological Assessment	JA	-	JA

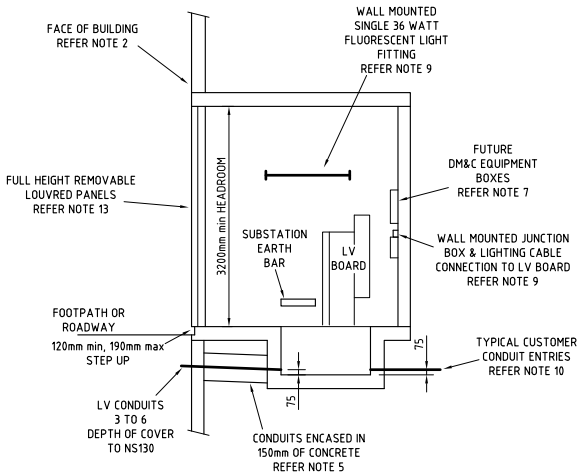
CONCEPT ONLY

  
Sydney | Newcastle  
1300 732 293 | projects@powersol.com.au  
PO Box 278,  
CHARLESTOWN NSW 2290

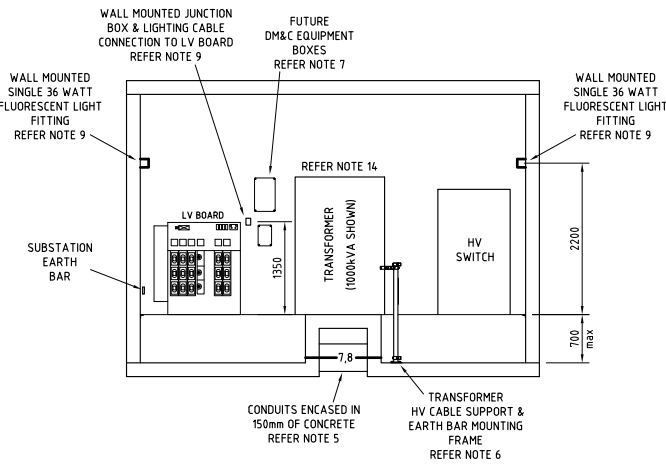
TITLE							East End, Newcastle Chamber Substation Stage 4 Building/Chamber Layout		
CAD FILE NAME	JOB No.	SIZE	SCALE	DESIGNER	SHEET	REV NO.			
N/A	5542	A3	NTS	J.ANTONUCCIO	3 of 4	B			

NOTES

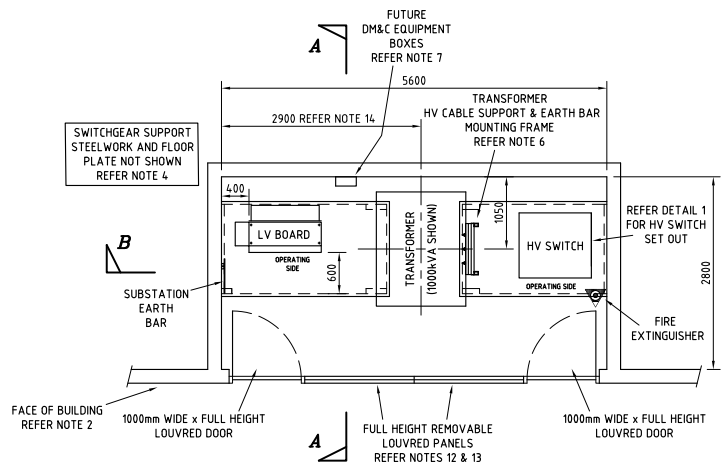
- THIS DRAWING SHOWS THE LAYOUT OF EQUIPMENT FOR A STANDARD SINGLE 750 OR 1000kVA TRANSFORMER SURFACE CHAMBER TYPE DISTRIBUTION SUBSTATION AND UTILISES THE EQUIPMENT SHOWN IN THE EQUIPMENT TABLE ONLY. EQUIPMENT SELECTED FROM THE OPTIONS SHOWN IN THE EQUIPMENT TABLE MUST BE SHOWN ON THE DESIGN PLAN FOR THE SUBSTATION. THE DRAWING MUST BE READ IN CONJUNCTION WITH NETWORK STANDARDS 113 AND 114.
- TO ENSURE ACCEPTABLE TRANSFORMER VENTILATION, THE SUBSTATION CHAMBER MUST BE LOCATED ON THE OUTSIDE FACE OF THE BUILDING, ADJACENT TO A SUITABLE ROADWAY AND NOT BEHIND FENCING. PARTICULAR ATTENTION MUST BE GIVEN TO COMPLYING WITH NETWORK STANDARD REQUIREMENTS ASSOCIATED WITH FIRE RATING AND VENTILATION SEPARATION OF THE BUILDING SURROUNDING THE SUBSTATION VENTILATION LOUVRES.
- ALL DIMENSIONS SHOWN ARE FINISHED SIZES.
- BOTH THE HV AND LV PITS AND THEIR ASSOCIATED STEELWORK ARE CONSTRUCTED TO THE DETAILS SHOWN ON DRAWING 191085 BUT TO THE DEPTHS SHOWN ON THIS DRAWING.
- IF THE SUBSTATION FLOOR IS OF SUSPENDED CONSTRUCTION OR CONDUITS ARE CONTAINED IN A VOID UNDER THE SUBSTATION FLOOR, ALL CONDUITS ARE REQUIRED TO BE ENCASED IN 150mm OF CONCRETE FOR THEIR ENTIRE RUN. THE HV CABLE SUPPORT BRACKET IS TO BE CONSTRUCTED TO THE DETAILS FOR THE NON CT SUPPORT BRACKET SHOWN ON DRAWING 162655 BUT WITH THE LEGS EXTENDED TO THE PIT FLOOR AND THE FOOT DELETED. THE EXTENDED LEGS ARE TO BE FIXED TO THE PIT WALL WITH UNISTRUT SADDLES. SADDLES ARE TO BE 150mm BELOW THE FINISHED SUBSTATION FLOOR LEVEL AND 150mm ABOVE THE PIT FLOOR.
- DM&C EQUIPMENT MAY BE FITTED TO THE SUBSTATION BY AUSGRID AFTER COMMISSIONING.
- GENERAL POWER FOR THE CHAMBER IS PROVIDED BY A 240 VOLT SINGLE PHASE DOUBLE OUTLET WHICH IS PART OF THE LV BOARD.
- SINGLE 36 WATT FLUORESCENT BATTENS ARE TO BE FITTED IN THE POSITIONS SHOWN. THEY ARE TO BE POWERED FROM THE 240 VOLT OUTLET ON THE LV BOARD VIA AN IMPACT RESISTANT SINGLE WAY LIGHT SWITCH IN THE POSITION SHOWN. LIGHTING POWER IS TO BE WIRED VIA SOLID UPVC CONDUIT TO THE JUNCTION BOX SHOWN. THE JUNCTION BOX IS TO BE A CLIPSAL 265 SERIES OR SIMILAR AND IS TO BE PROVIDED WITH A SUITABLE CABLE TERMINAL BLOCK. A DOUBLE INSULATED 3 CORE CABLE IS TO BE PROVIDED FROM THE JUNCTION BOX TO THE POWER OUTLET ON THE LV BOARD. THE LV BOARD END OF THE CABLE IS TERMINATE IN A 3 PIN PLUG WHILST THE JUNCTION BOX END IS TO TERMINATE IN THE BOX'S TERMINAL BLOCK.
- TRANSFORMER LV AND CUSTOMER CABLES SHOULD BE ARRANGED SUCH THAT CROSSINGS ARE MINIMISED AND CABLE BENDING RADII IS NOT EXCEEDED. ALL USED AND UNUSED CUSTOMER'S CONDUITS ARE TO BE FIRE STOPPED AS INDICATED IN NETWORK STANDARD 177 AFTER THE INSTALLATION OF THE CUSTOMERS CABLES. THE EXACT LOCATION AND NUMBER OF CUSTOMER CONDUITS IS TO BE SHOWN ON PROJECT DESIGN PLANS.
- AN EARTHING DESIGN IS REQUIRED FOR EACH SITE. THE LOCATION OF EARTH RODS SHOWN ON THIS DRAWING ARE TYPICAL ONLY.
- THE AREA BETWEEN THE LOUVRED DOORS IS TO BE FILLED WITH TWO FULL HEIGHT REMOVABLE LOUVRED PANELS OF EQUAL WIDTH.
- LOUVRED DOORS AND REMOVABLE PANELS SHOULD NOT EXCEED 3500mm IN HEIGHT. ANY AREA ABOVE THE MAXIMUM 3500mm SHOULD BE FILLED WITH REMOVABLE LOUVRED PANELS.
- THE LOCATION OF THE TRANSFORMER IS TO BE ADJUSTED SO THAT THE WHEELS ARE EQUALLY SPACED FROM BOTH PIT EDGES.



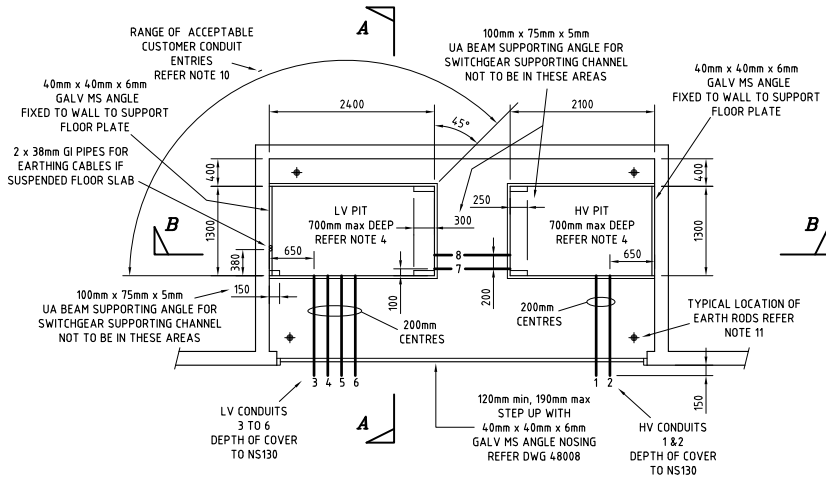
SECTION A-A  
SCALE 1:50



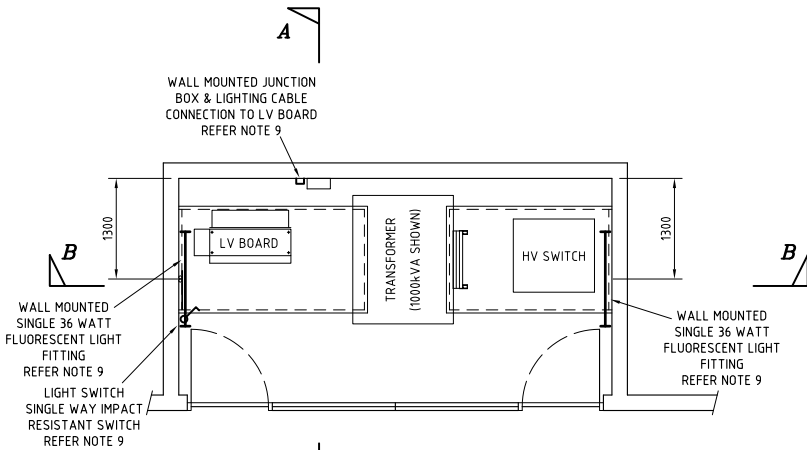
SECTION B-B  
SCALE 1:50



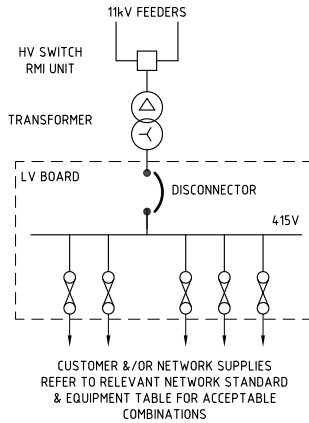
PLAN SHOWING EQUIPMENT LAYOUT  
SCALE 1:50



PLAN SHOWING PIT & CONDUIT LAYOUT  
SCALE 1:50



PLAN SHOWING LIGHT AND POWER LAYOUT  
SCALE 1:50



LINE DIAGRAM  
NOT TO SCALE

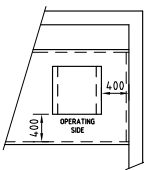
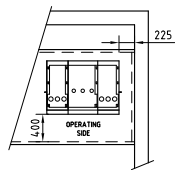


ABB SAFELINK



SIEMENS 8DJH RTR

DETAIL 1  
HV SWITCH SET OUT  
SCALE 1:50

EXTRACT FROM AUSGRID  
DRG224408\_01r04

EQUIPMENT TABLE REFERENCE NOTE 1			
NAME	TYPE	WEIGHT	STOCKCODE
HV SWITCH	SIEMENS 8DJH RTR WITH INTEGRATED EFI	360kg	185192
	ABB SAFELINK 2 WITH INTEGRATED EFI	280kg	184921
	750kVA	3400kg	180357
TRANSFORMER	1000kVA	4000kg	180358
	SAIF CHAMBER TYPE	210kg	181790 TO 181793, 181834 & 181835

REFERENCE DRAWINGS	
EARTH ROD INSTALLATION	25121
DETAILS OF WEATHERPROOF LOUVRED DOORS	43140
CONSTRUCTION DETAILS - MISCELLANEOUS	48008
HV CABLE SUPPORT MOUNTING STAND	162655
HV PIT CONSTRUCTION AND SUPPORT STEELWORK	191085
INSTALLATION OF SIEMENS 8DJH RTR (RMI)	234377
INSTALLATION OF ABB SAFELINK 2	224420

CONDUIT SCHEDULE				
NUMBER	DIAMETER	MATERIAL	RADIUS mm BEND	FUNCTION
1-2	125	UPVC	1000	HV FEEDERS
3-6	125	UPVC	1000	LV NETWORK DISTRIBUTORS
7	100	UPVC	1000	EARTHING
8	100	UPVC	1000	FUTURE DM&C

CONCEPT ONLY

**power solutions**  
Sydney | Newcastle  
1300 732 293 | projects@powersol.com.au  
PO Box 278,  
CHARLESTOWN NSW 2290

TITLE  
**East End, Newcastle  
Chamber Substation  
Stage 4  
Ausgrid Package Chamber Layout 2**

CAD FILE NAME	JOB NO.	SIZE	SCALE	DESIGNER	SHEET	REV NO.
N/A	5542	A3	NTS	J.ANTONUCCIO	4 of 4	B

REV	DATE	REVISION DESCRIPTION	BY	CHECK	APPR'D
B	28/03/2023	Updated Concept Plans	JA	SG	JA
A	9/03/2023	Issued for Archeological Assessment	JA	-	JA

REFER TO SHEET 1 FOR LAYOUT PLAN AND LOCALITY SKETCH  
REFER TO SHEET 2 FOR GIS VIEW AND TRENCH SECTIONS  
REFER TO SHEET 3 FOR BUILDING/CHAMBER LAYOUT  
REFER TO SHEET 4 FOR AUSGRID PACKAGE CHAMBER LAYOUT 2

Proposed Layout 2  
Package Chamber  
Substation. Refer to sheet  
3 & 4 for Package 2  
chamber layout.

Stage 3

Proposed Configuration  
A Commercial Pillar.

Existing chamber  
substation

Existing HV  
feeders

Existing LV cables

COUNCIL LAND - NOT IN SCOPE - INDICATIVE DESIGN ONLY

Future Stage 4

- SUMMARY OF WORKS**
- INSTALL 1000kVA PACKAGE CHAMBER SUBSTATION TO SUPPLY STAGE 3 FOR A NOMINAL 1540A LOAD.
  - 11kV EXTENSION FROM THORN ST.
  - LV INTERCONNECTION TO LAING ST



**power**  
solutions

Sydney | Newcastle  
1300 732 293 | projects@powersol.com.au  
PO Box 278,  
CHARLESTOWN NSW 2290

TITLE							East End, Newcastle Chamber Substation Stage 3 Layout Plan		
CAD FILE NAME	JOB No.	SIZE	SCALE	DESIGNER	SHEET	REV NO.			
N/A	5541	A3	NTS	J.ANTONUCCIO	1 of 4	B			



Proposed HV & LV Cable trench  
**NOTE: EXACT TRENCH DETAILS/ALIGNMENT TO BE CONFIRMED DURING DETAILED DESIGN**

PROPERTY ALIGNMENT 0

FOOTWAY/LANEWAY

COVER

1 2  
3 4  
5 6

1440

530

750

HV & LV SECTION

- 300AL4 CABLE IN 150mm CONDUIT
- 150mm SPARE CONDUIT
- 150mm SPARE CONDUIT
- 150mm SPARE CONDUIT
- 400AL3 CABLE IN 150mm CONDUIT
- 400AL3 CABLE IN 150mm CONDUIT

Proposed HV cable trench.  
**NOTE: EXACT TRENCH DETAILS/ALIGNMENT TO BE CONFIRMED DURING DETAILED DESIGN**

PROPERTY ALIGNMENT 0

FOOTWAY/LANEWAY

COVER

1 2  
3 4

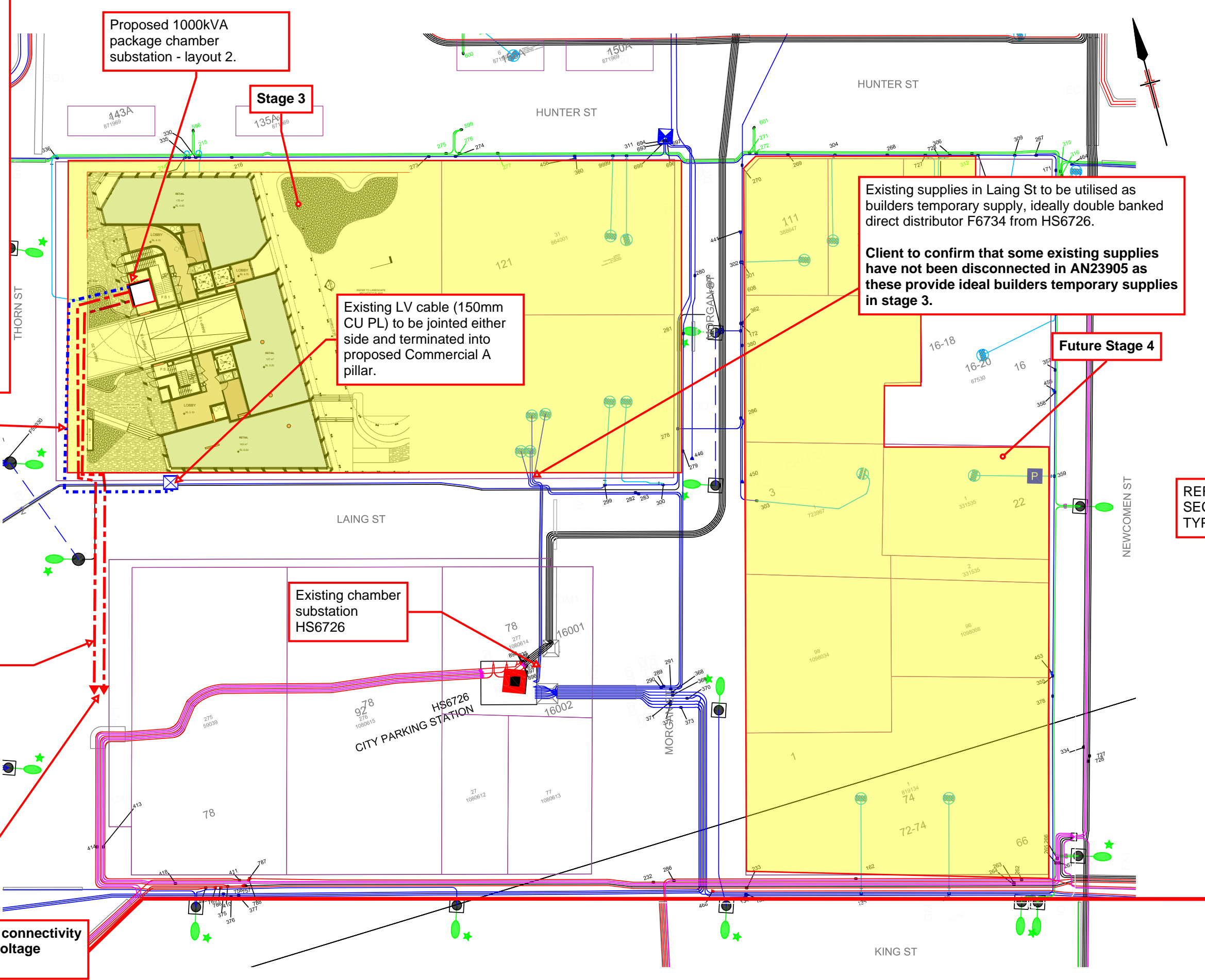
1210

530

750

HV ONLY SECTION

- 150mm SPARE CONDUIT
- 150mm SPARE CONDUIT
- 400AL3 CABLE IN 150mm CONDUIT
- 400AL3 CABLE IN 150mm CONDUIT



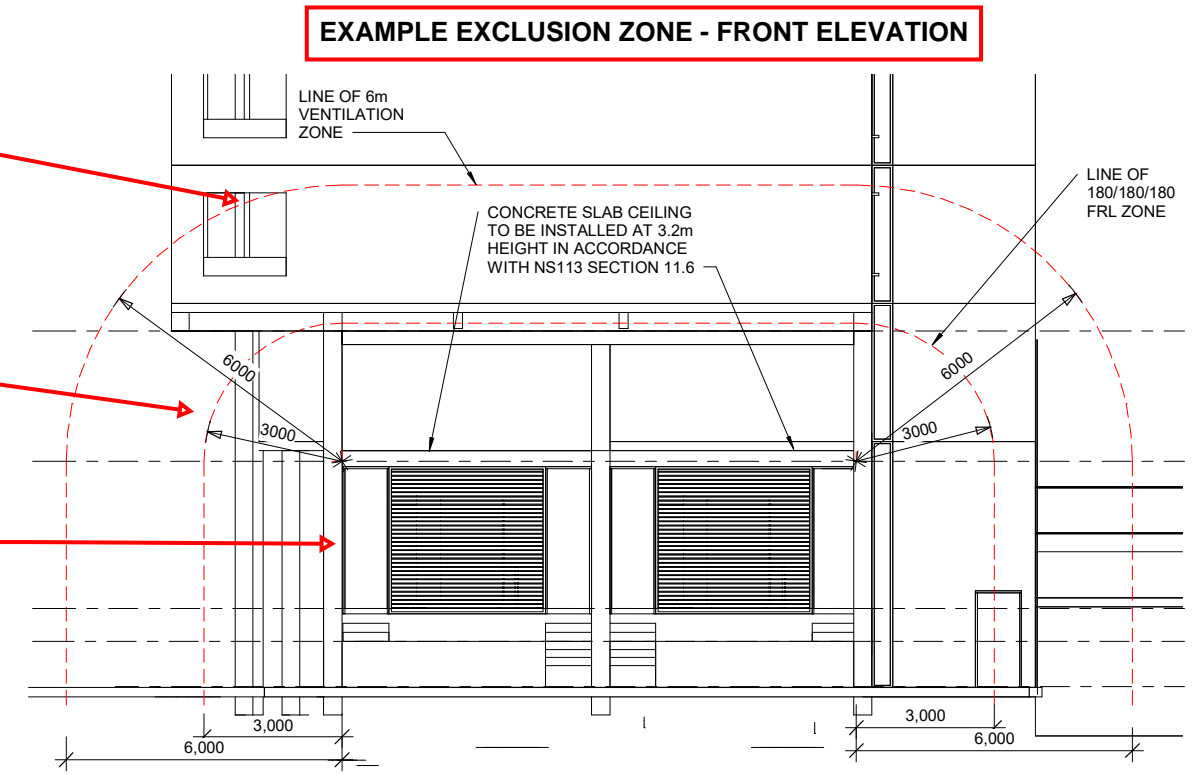
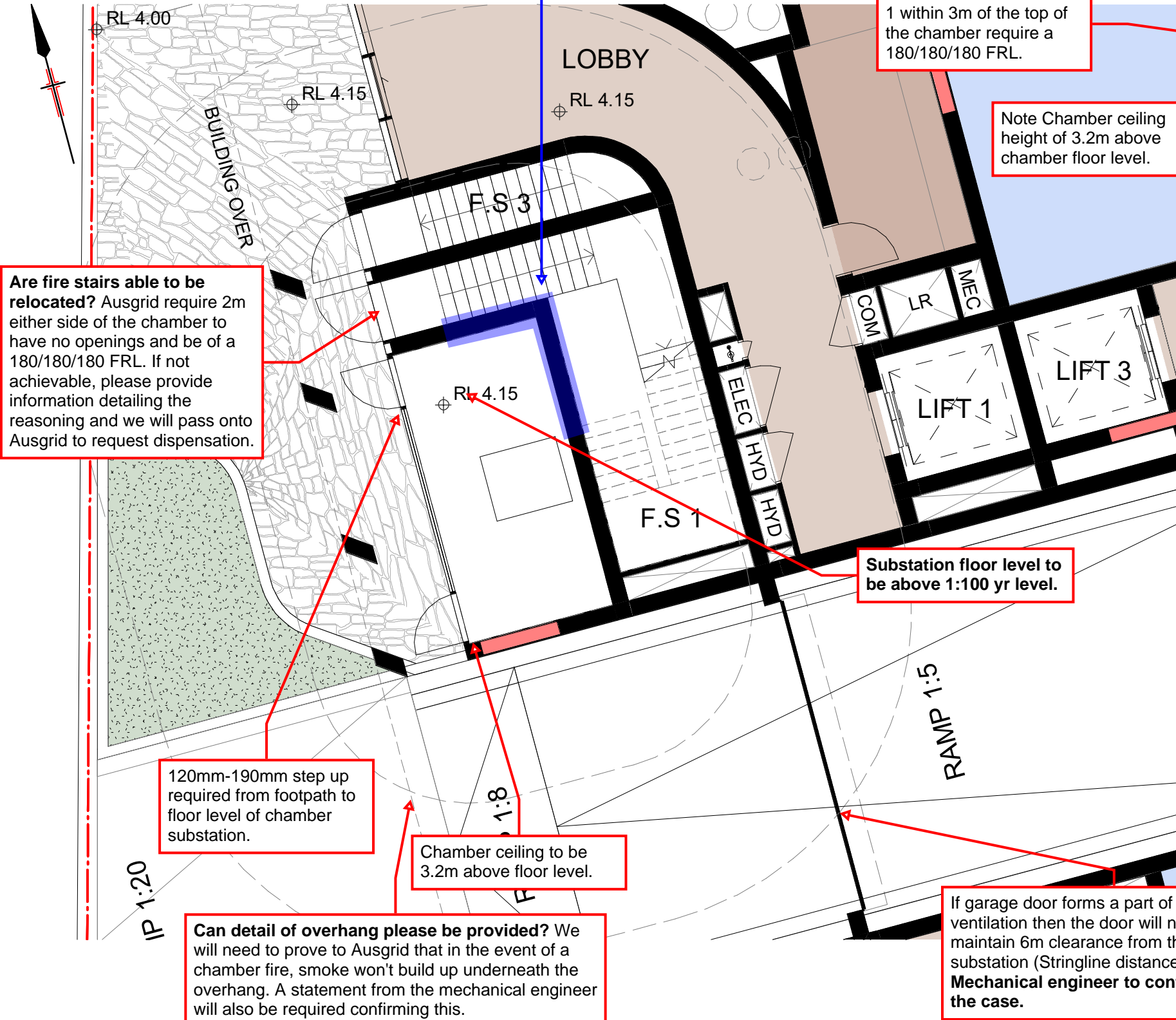
REV	DATE	REVISION DESCRIPTION	BY	CHECK	APPR'D
B	28/03/2023	Updated Concept Plans	JA	CL	JA
A	9/03/2023	Issued for Archeological Assessment	JA	-	JA

CONCEPT ONLY

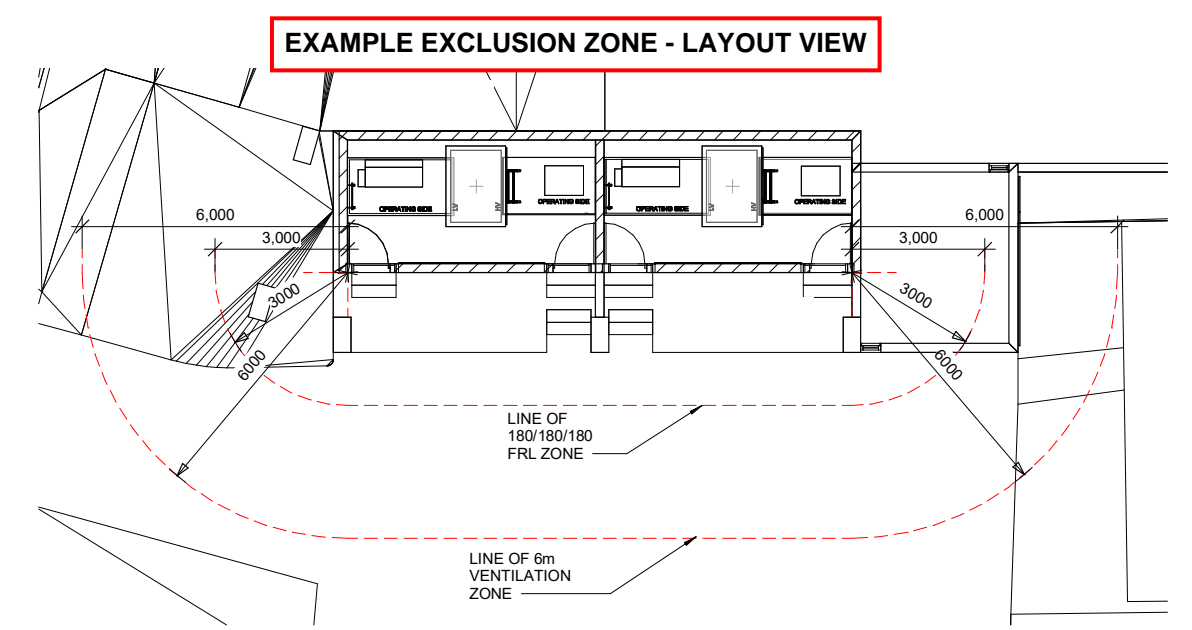
**power**  
solutions

Sydney | Newcastle  
1300 732 293 | projects@powersol.com.au  
PO Box 278,  
CHARLESTOWN NSW 2290

TITLE							East End, Newcastle Chamber Substation Stage 3 GIS/Detailed Plan	
CAD FILE NAME	JOB No.	SIZE	SCALE	DESIGNER		SHEET	REV NO.	
N/A	5541	A3	NTS	J.ANTONUCCIO		2 of 4	B	



3 EXCLUSION ZONE - FRONT ELEVATION  
1 : 100



1 EXCLUSION ZONE - LAYOUT  
1 : 100

REV	DATE	REVISION DESCRIPTION	BY	CHECK	APPRD
B	28/03/2023	Updated Concept Plans	JA	CL	JA
A	9/03/2023	Issued for Archeological Assessment	JA	-	JA

CONCEPT ONLY

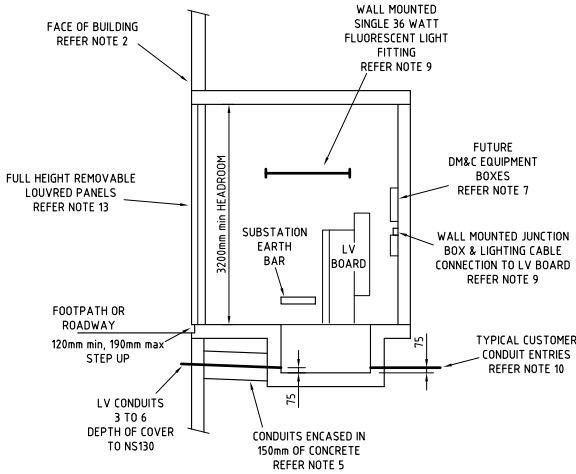
**power solutions**  
 Sydney | Newcastle  
 1300 732 293 | projects@powersol.com.au  
 PO Box 278,  
 CHARLESTOWN NSW 2290

TITLE East End, Newcastle Chamber Substation Stage 3 Building/Chamber Layout					
CAD FILE NAME N/A	JOB No. 5541	SIZE A3	SCALE NTS	DESIGNER J.ANTONUCCIO	SHEET 3 of 4
					REV NO. B

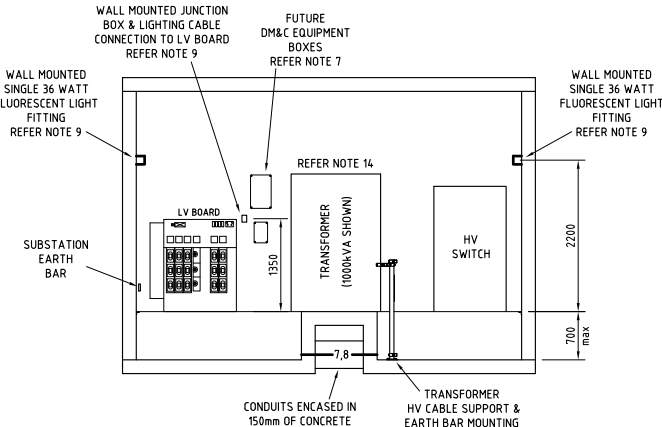


NOTES

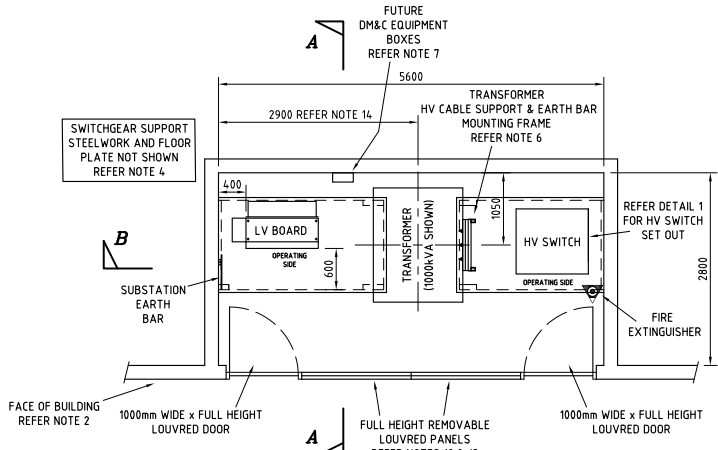
1. THIS DRAWING SHOWS THE LAYOUT OF EQUIPMENT FOR A STANDARD SINGLE 750 OR 1000kVA TRANSFORMER SURFACE CHAMBER TYPE DISTRIBUTION SUBSTATION AND UTILISES THE EQUIPMENT SHOWN IN THE EQUIPMENT TABLE ONLY. EQUIPMENT SELECTED FROM THE OPTIONS SHOWN IN THE EQUIPMENT TABLE MUST BE SHOWN ON THE DESIGN PLAN FOR THE SUBSTATION. THE DRAWING MUST BE READ IN CONJUNCTION WITH NETWORK STANDARDS 113 AND 114.
2. TO ENSURE ACCEPTABLE TRANSFORMER VENTILATION, THE SUBSTATION CHAMBER MUST BE LOCATED ON THE OUTSIDE FACE OF THE BUILDING, ADJACENT TO A SUITABLE ROADWAY AND NOT BEHIND FENCING. PARTICULAR ATTENTION MUST BE GIVEN TO COMPLYING WITH NETWORK STANDARD REQUIREMENTS ASSOCIATED WITH FIRE RATING AND VENTILATION SEPARATION OF THE BUILDING SURROUNDING THE SUBSTATION VENTILATION LOUVRES.
3. ALL DIMENSIONS SHOWN ARE FINISHED SIZES.
4. BOTH THE HV AND LV PITS AND THEIR ASSOCIATED STEELWORK ARE CONSTRUCTED TO THE DETAILS SHOWN ON DRAWING 191085 BUT TO THE DEPTHS SHOWN ON THIS DRAWING.
5. IF THE SUBSTATION FLOOR IS OF SUSPENDED CONSTRUCTION OR CONDUITS ARE CONTAINED IN A VOID UNDER THE SUBSTATION FLOOR, ALL CONDUITS ARE REQUIRED TO BE ENCASED IN 150mm OF CONCRETE FOR THEIR ENTIRE RUN. THE HV CABLE SUPPORT BRACKET IS TO BE CONSTRUCTED TO THE DETAILS FOR THE NON CT SUPPORT BRACKET SHOWN ON DRAWING 162655 BUT WITH THE LEGS EXTENDED TO THE PIT FLOOR AND THE FOOT DELETED. THE EXTENDED LEGS ARE TO THE FIXED TO THE PIT WALL WITH UNISTRUT SADDLES. SADDLES ARE TO BE 150mm BELOW THE FINISHED SUBSTATION FLOOR LEVEL AND 150mm ABOVE THE PIT FLOOR.
6. DM&C EQUIPMENT MAY BE FITTED TO THE SUBSTATION BY AUSGRID AFTER COMMISSIONING.
7. GENERAL POWER FOR THE CHAMBER IS PROVIDED BY A 240 VOLT SINGLE PHASE DOUBLE OUTLET WHICH IS PART OF THE LV BOARD.
8. SINGLE 36 WATT FLUORESCENT BATTENS ARE TO BE FITTED IN THE POSITIONS SHOWN. THEY ARE TO BE POWERED FROM THE 240 VOLT OUTLET ON THE LV BOARD VIA AN IMPACT RESISTANT SINGLE WAY LIGHT SWITCH IN THE POSITION SHOWN. LIGHTING POWER IS TO BE WIRED VIA SOLID UPVC CONDUIT TO THE JUNCTION BOX SHOWN. THE JUNCTION BOX IS TO BE A CLIPSAL 265 SERIES OR SIMILAR AND IS TO BE PROVIDED WITH A SUITABLE CABLE TERMINAL BLOCK. A DOUBLE INSULATED 3 CORE CABLE IS TO BE PROVIDED FROM THE JUNCTION BOX TO THE POWER OUTLET ON THE LV BOARD. THE LV BOARD END OF THE CABLE IS TERMINATE IN A 3 PIN PLUG WHILST THE JUNCTION BOX END IS TO TERMINATE IN THE BOX'S TERMINAL BLOCK.
9. TRANSFORMER LV AND CUSTOMER CABLES SHOULD BE ARRANGED SUCH THAT CROSSINGS ARE MINIMISED AND CABLE BENDING RADII IS NOT EXCEEDED . ALL USED AND UNUSED CUSTOMER'S CONDUITS ARE TO BE FIRE STOPPED AS INDICATED IN NETWORK STANDARD 177 AFTER THE INSTALLATION OF THE CUSTOMERS CABLES. THE EXACT LOCATION AND NUMBER OF CUSTOMER CONDUITS IS TO BE SHOWN ON PROJECT DESIGN PLANS.
10. AN EARTHING DESIGN IS REQUIRED FOR EACH SITE. THE LOCATION OF EARTH RODS SHOWN ON THIS DRAWING ARE TYPICAL ONLY.
11. THE AREA BETWEEN THE LOUVRED DOORS IS TO BE FILLED WITH TWO FULL HEIGHT REMOVABLE LOUVRED PANELS OF EQUAL WIDTH.
12. LOUVRED DOORS AND REMOVABLE PANELS SHOULD NOT EXCEED 3500mm IN HEIGHT. ANY AREA ABOVE THE MAXIMUM 3500mm SHOULD BE FILLED WITH REMOVABLE LOUVRED PANELS.
13. THE LOCATION OF THE TRANSFORMER IS TO BE ADJUSTED SO THAT THE WHEELS ARE EQUALLY SPACED FROM BOTH PIT EDGES.



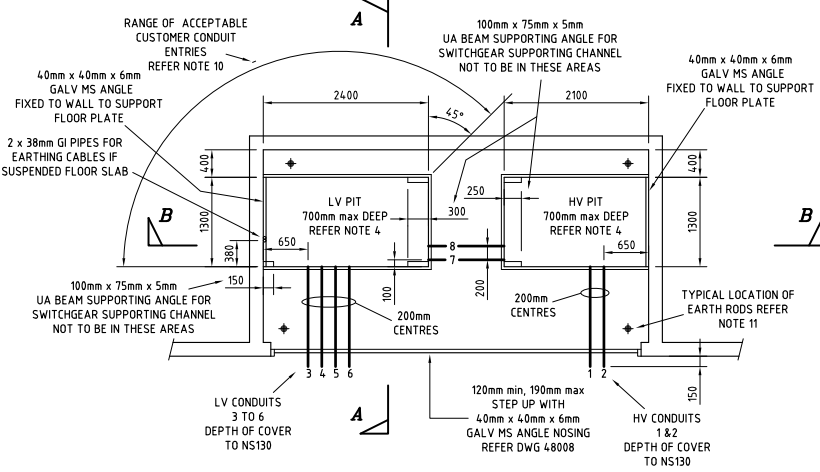
SECTION A-A  
SCALE 1:50



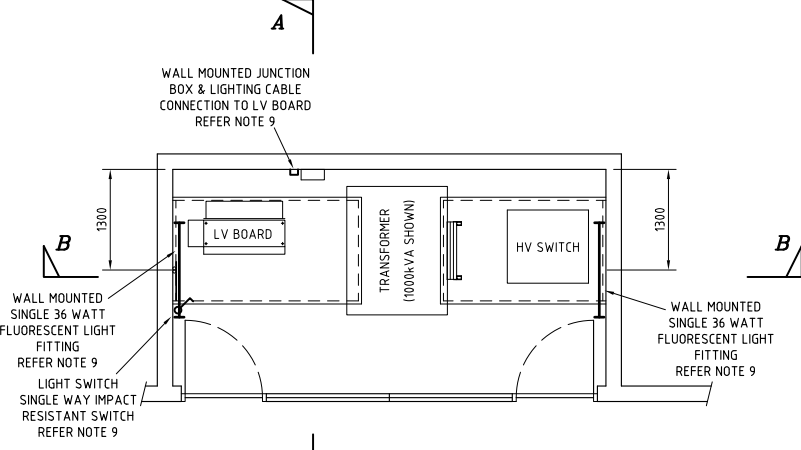
SECTION B-B  
SCALE 1:50



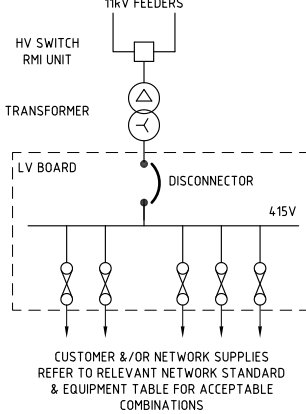
PLAN SHOWING EQUIPMENT LAYOUT  
SCALE 1:50



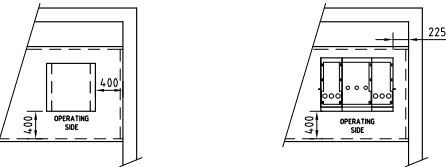
PLAN SHOWING PIT & CONDUIT LAYOUT  
SCALE 1:50



PLAN SHOWING LIGHT AND POWER LAYOUT  
SCALE 1:50



LINE DIAGRAM  
NOT TO SCALE



DETAIL 1  
HV SWITCH SET OUT  
SCALE 1:50

EXTRACT FROM AUSGRID  
DRG224408\_01r04

EQUIPMENT TABLE REFER NOTE 1			
NAME	TYPE	WEIGHT	STOCKCODE
HV SWITCH	SIEMENS 8DJH RTR WITH INTEGRATED EFI	360kg	185192
	ABB SAFELINK 2 WITH INTEGRATED EFI	280kg	184921
	750kVA	3400kg	180357
TRANSFORMER	1000kVA	4000kg	180358
	SAIF CHAMBER TYPE	210kg	181790 TO 181793, 181834 & 181835

REFERENCE DRAWINGS	
EARTH ROD INSTALLATION	25121
DETAILS OF WEATHERPROOF LOUVRED DOORS	43140
CONSTRUCTION DETAILS - MISCELLANEOUS	48008
HV CABLE SUPPORT MOUNTING STAND	162655
HV PIT CONSTRUCTION AND SUPPORT STEELWORK	191085
INSTALLATION OF SIEMENS 8DJH RTR (RMI)	234377
INSTALLATION OF ABB SAFELINK 2	224420

CONDUIT SCHEDULE				
NUMBER	DIAMETER	MATERIAL	RADIUS mm BEND	FUNCTION
1-2	125	UPVC	1000	HV FEEDERS
3-6	125	UPVC	1000	LV NETWORK DISTRIBUTORS
7	100	UPVC	1000	EARTHING
8	100	UPVC	1000	FUTURE DM&C

CONCEPT ONLY



Sydney | Newcastle  
1300 732 293 | projects@powersol.com.au  
PO Box 278,  
CHARLESTOWN NSW 2290

TITLE

East End, Newcastle  
Chamber Substation  
Stage 3  
Ausgrid Package Chamber Layout 2

CAD FILE NAME	JOB NO.	SIZE	SCALE	DESIGNER	SHEET	REV NO.
N/A	5541	A3	NTS	J.ANTONUCCIO	4 of 4	B

REV	DATE	REVISION DESCRIPTION	BY	CHECK	APPR'D
B	28/03/2023	Updated Concept Plans	JA	CL	JA
A	9/03/2023	Issued for Archeological Assessment	JA	-	JA